

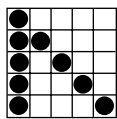


# WEEKDAY MATINEE PROGRAM

\$10 Buy-in Plays 12-on • \$15 Buy-in Plays 18-on • \$5 Extra 6-ons  
 Monday-Friday Games Start at 1:00 P.M. • PBK minimum Buy-in 20 cards-\$20

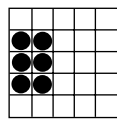
Shaded games not included in your package.

**Game 1  
 Crazy Bingo**  
*2 straight lines,  
 first number wild*



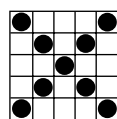
Prize: \$200  
 \$300  
 \$400

**Game 2  
 Six Pack**  
*No FREE Space*



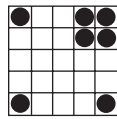
Prize: \$200  
 \$300  
 \$400

**Game 3  
 Letter "X"**



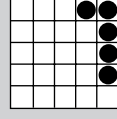
Prize: \$200  
 \$300  
 \$400

**Game 4  
 Stamp &  
 4 Corners**



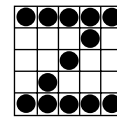
Prize: \$200  
 \$300  
 \$400

**Game 5  
 Five Around  
 the Corner**  
*Floor Sales: \$1*



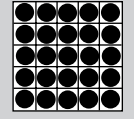
Prize: \$250  
 in pulltabs

**Game 6  
 Letter "Z"**  
*Floor Sales: \$1  
 Progressive*



Prize: Jackpot  
 or \$500

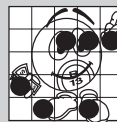
**Game 7  
 3 Second  
 Coverall**  
*Floor Sales: \$1*



Prize: \$200

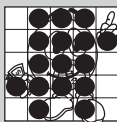
## B-13 Special

**Game 8  
 Eyes, Hands  
 & Feet**



Prize: Jackpot  
 or \$313

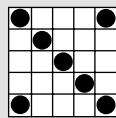
**Game 9  
 Full Body**



Prize: Jackpot  
 or \$513

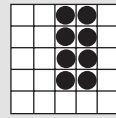
*Floor  
 Sales:  
 \$2  
 same  
 sheet*

**Game 10  
 Double Bingo**  
*Four Corners  
 Count*



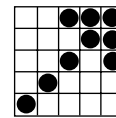
Prize: \$200  
 \$300  
 \$400

**Game 11  
 Eight Pack**  
*FREE Space  
 Counts*



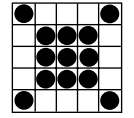
Prize: \$200  
 \$300  
 \$400

**Game 12  
 Crazy Arrow**



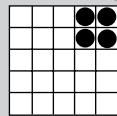
Prize: \$200  
 \$300  
 \$400

**Game 13  
 Sputnik**  
*Extra 3-on: \$1  
 Progressive*



Prize: Jackpot  
 or \$500

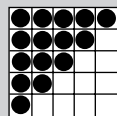
**Game 14  
 Charity Game**  
*One stamp in  
 corner on each face  
 of your 3-on.  
 Floor Sales: \$1*



Prize: 50% to winner  
 50% to Miracle  
 Charity Fund

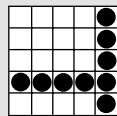
INTERMISSION

**Game 15  
 Triangle Game**  
*Floor Sales: \$1*



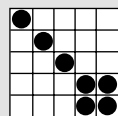
Prize: Shaded \$500  
 Unshaded \$250

**Game 16  
 Double  
 Hardway**  
*No FREE Space*



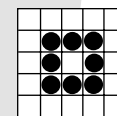
Prize: \$200  
 \$300  
 \$400

**Game 17  
 Crazy Kite**  
*Any Direction*



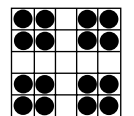
Prize: \$200  
 \$300  
 \$400

**Game 18  
 Small Frame**



Prize: \$200  
 \$300  
 \$400

**Game 19  
 Clover Leaf**  
*Extra 3-on: \$1  
 Progressive*



Prize: Jackpot  
 or \$500

## Pot of Gold

Floor Sales: \$3

Game 20 • **Match 3**

Posted amount or \$100

Game 21 • **Outline diamond**

Posted amount or \$200

Game 22 • **Large picture**

frame Posted amount or \$300

Game 23 • **Coverall**

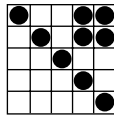
Posted amount or \$500

Prize for coverall in 46 numbers or less: **\$500,000** paid in annuity



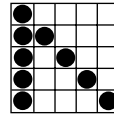
Game 24

**Line & Stamp**



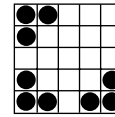
Prize: \$200  
\$300  
\$400

Game 25  
**Crazy Bingo**  
2 straight lines,  
first number wild



Prize: \$200  
\$300  
\$400

Game 26  
**3 Brackets**



Prize: \$200  
\$300  
\$400

Game 27

**Pick 8 Special**

Floor Sales:

\$1/1-on \$5/7-on

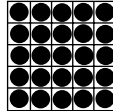
?	?	?
?	FREE	?
?	?	?

Get all 8 #'s  
called in  
20 #'s or less

Prize: **Jackpot**  
or \$500

Game 28  
**G-Ball Coverall**

Extra 3-on: \$1  
Coverall in exact  
number of first G-Ball  
called wins



Prize: **Jackpot**  
or \$1000

Game 29

**Bonanza**

Floor Sales: \$1



Be the first  
to fill your  
card in 50  
#'s or less

Prize: **Jackpot**  
or \$500

# HOUSE RULES

- Each player must purchase an admission package; no splitting of packs allowed.
- Each player must display a receipt at all times.
- It is the player's responsibility to shout "BINGO" loud enough to alert the caller to stop the game.
- Once the game is closed or the caller starts to call the letter of the next ball, no previous BINGOs will be honored and the game shall continue.
- Any altered, mutilated or defaced BINGO cards, Pulltabs or door prize tickets will not be honored.
- One machine per guest.
- Daubers must be used for all BINGO games.
- BINGO winners of \$1,200 or more, and Pulltab winners of \$600 or more must have two forms of identification, a social security card and a valid picture ID to collect winnings.
- It is the player's responsibility to put the carbon copy of the Pick 8 in the proper boxes at the end of the table.
- The decision of management is final on all games.
- Please keep talking to a minimum while BINGO is being called.
- No one under 18 years of age is permitted in the hall.
- Alcohol and/or drugs are strictly prohibited on the premises.
- No food or beverages may be brought into the hall, unless a player requires a special diet.
- No unattended minors or pets may be left in a player's automobile.
- Verbal abuse or the use of abusive language will not be tolerated.
- No solicitation of any kind is allowed on the premises.
- The management reserves the right to refuse service to any person.
- We are not responsible for lost or stolen articles.
- No electronic devices are permitted in the building. All electronic devices must be turned into Security.
- Pull Tabs are void if taken out of the building.
- Any bent door prize tickets are invalid for the door prize drawings.
- Only one door prize per person per session.
- Player's name must appear on their receipt to validate the player's hotball.
- A valid picture I.D. is required when redeeming club card points at the admission booth.

